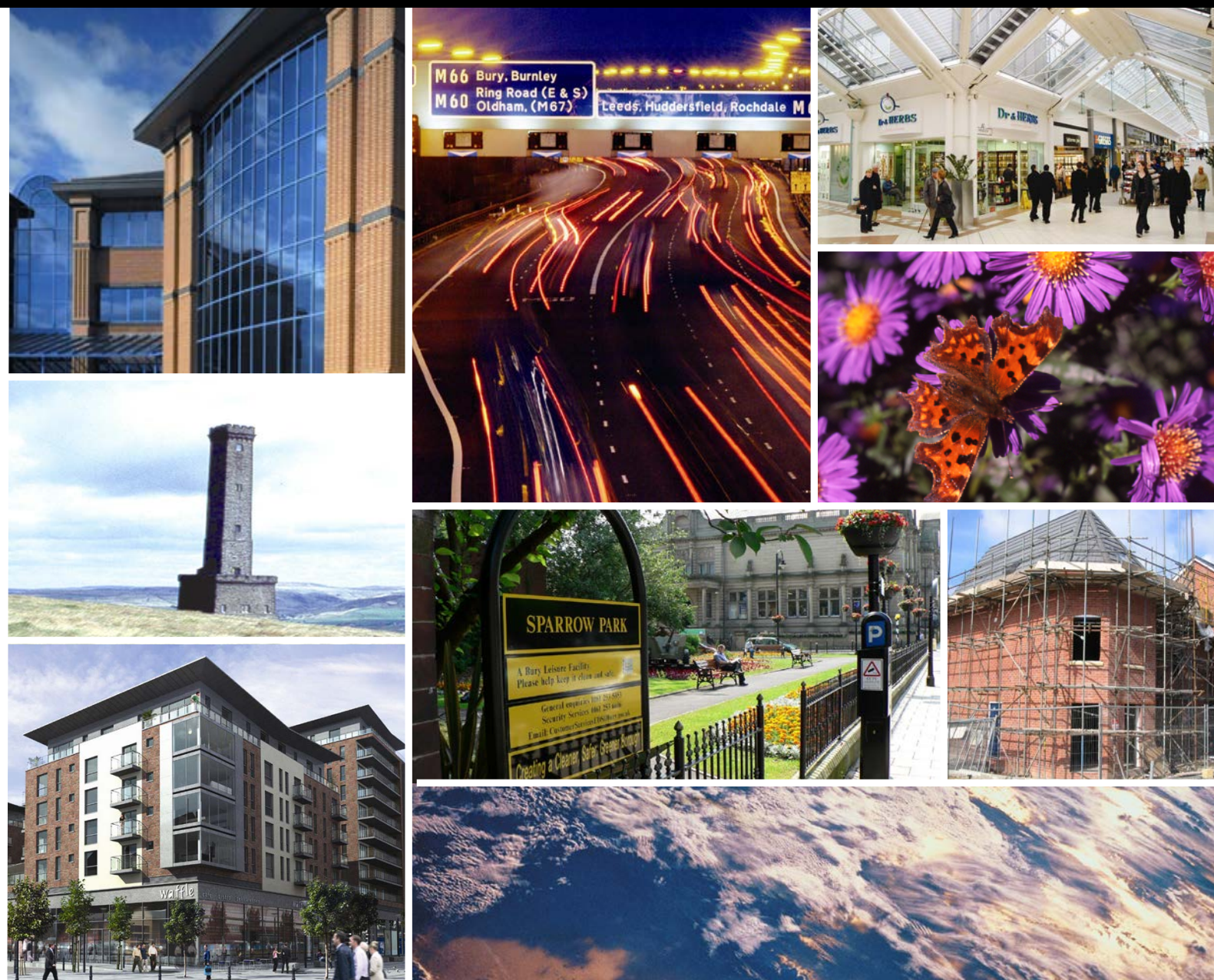


STATEMENT OF COMMUNITY INVOLVEMENT

RESPONSES REPORT

OCTOBER 2015



Introduction

- 1.1 This document sets out the consultation that was carried out on the revised 2015 Statement of Community Involvement, the representations received and the Council's response to those representations.
- 1.2 The revised SCI was published as a Consultation Draft for a 4-week consultation period from 12 August to 9 September 2015, and was revised to take account of changing circumstances, in particular to set out how consultation and community involvement will take place in respect of the Greater Manchester Spatial Framework (GMSF) which is to be prepared by all ten Greater Manchester authorities.
- 1.3 Despite there being no requirement to carry out consultation on the SCI in the Regulations, this consultation involved writing to all organisations and bodies on the Council database which were considered relevant to the document (see Appendix 1 for a draft of the letter).
- 1.4 The draft document was put on deposit at selected local libraries, on the Council website and at the Planning offices at Knowsley Place. The consultation was also promoted using the department's social media accounts on Facebook and Twitter.

Representations received and responses made

- 2.1 A total of 10 representations were received on the SCI Consultation Draft. Table 1 below shows details of the respondents.

Table 1: SCI Consultation Draft respondents

Organisation
Historic England
Greater Manchester Minerals and Waste Unit
Natural England
Network Rail
Bury Federation of Civic Societies
Greater Manchester Ecology Unit
National Trust
Walmersley Residents Action Group
Office of Rail and Road
Ms Janet Dunnett

- 2.2 All comments received on the Consultation Draft of the SCI were considered and amendments and revisions were made where considered appropriate.
- 2.3 There was general support for the SCI and its content with some suggested minor amendments to the wording, one of which has been incorporated within the final document. Table 2 below provides a summary of the issues raised and the Council's response to them:

Table 2: What main issues were raised and how were they addressed?

Key issues	Council's response
<p>The Minerals and Waste Planning Unit should be identified within 'Other Consultation Bodies'.</p>	<p>Comments noted, no change required.</p> <p>The Minerals and Waste Planning Unit are not a generic consultation body under the Regulations. Other bodies can be consulted at the Council's discretion, and indeed the Unit is on the database and is consulted on such documents.</p>
<p>Ward Councils, Residents Associations and Civic Societies should be part of the list of consultation bodies. Letters should be used as many have little or no experience of the Internet.</p>	<p>Comments noted, no change required. Other bodies can be consulted at the Council's discretion and Ward Councillors are notified as a matter of course. Residents Associations and Civic Societies are on the Council's database and these bodies are notified where considered relevant, such as on Local Plan matters where targeted letters have been sent out outlining the key issues for the area in which the group are based.</p> <p>Letters are used as a means of reaching contacts on the database, although where email addresses are held then these are used for environmental and budgetary reasons.</p>
<p>When site-specific proposals are involved neighbours should be individually notified as if a planning application had been submitted.</p>	<p>Comments noted, change required. The Table on page 6 has been amended to note that more targeted consultation may be considered in such cases.</p>
<p>No evidence of how local people will have a say in how their neighbourhood will look, what it will be like to use and on the provision for future demands and issues. Consultation methods and levels of engagement could be more innovative.</p>	<p>Comments noted, no change required. The SCI accords with Government regulations, policy and guidance and offers sufficient flexibility to tailor consultation activities and methods to the document being prepared, as appropriate and as resources allow.</p>

Table 3: Further changes made post-consultation

2.4 The following changes have been made to the SCI following the public consultation and prior to adoption:

Change	Commentary
Chapter 3: Added the following text - 'The methods used will be tailored to suit the scale and nature of impact of the decisions to be made and the particular needs of people being consulted'.	To retain the reference from the 2013 SCI which helped to retain flexibility and highlight that consultation methods will be vary according to the type of document out to consultation.

APPENDIX 1 – CONSULTATION DRAFT AUGUST 2015 LETTER

Our Ref:

Date: 12 August 2015

Please Ask For: Philippa Brunsdon

Direct line: 0161 253 7411

Direct fax: 0161 253 5290

E-mail: p.brunsdon@bury.gov.uk

BURY STATEMENT OF COMMUNITY INVOLVEMENT: CONSULTATION

As you may be aware, as part of the Local Plan process, the Council is required to prepare a Statement of Community Involvement (SCI). The role of the SCI is to specify how the Council will involve the community in the preparation of future planning policy documents, such as the Local Plan, as well as in the processing of planning applications.

The current SCI was adopted in August 2013 and we are proposing to amend the document to reflect changing circumstances. Most notably, since the current SCI was adopted, the Council has agreed to work together with the other Greater Manchester councils to prepare a joint Greater Manchester Spatial Framework (GMSF). The SCI has therefore been updated to set out how consultation and community involvement will take place in respect of the GMSF.

Once adopted, all future planning consultations and publicity will be carried out in line with its requirements.

The revised draft SCI is now the subject of a four-week period of public consultation from **Wednesday 12 August to Wednesday 9 September 2015**. It can be downloaded from the Council's web site at www.bury.gov.uk/planningconsultations.

Please note, the Council's website is in the process of being updated so if you are unable to locate the document on the website or if you would like to request a copy or discuss the SCI consultation draft, please contact a member of the Strategic Planning and Economic Development section on 0161 253 5550 or by email at planning.policy@bury.gov.uk.

Alternatively, copies can also be obtained from, or inspected at, the Planning offices at 3 Knowsley Place, Duke Street, Bury and can also be inspected at Bury Town Hall and selected local libraries (please see www.bury.gov.uk/planningconsultations for a list).

Please send any comments by email to planning.policy@bury.gov.uk or by post to the address below by **no later than Wednesday 9 September 2015**.

Strategic Planning and Economic Development
3 Knowsley Place
Duke Street
Bury
BL9 0EJ

Yours sincerely,

A handwritten signature in black ink that reads "P Brunsdon". The signature is written in a cursive style with a small dot at the end.

PHILIPPA BRUNSDEN
MONITORING AND RESEARCH OFFICER

STRATEGIC PLANNING AND ECONOMIC DEVELOPMENT



Bury Council
Strategic Planning and Economic Development,
3 Knowsley Place,
Duke Street, Bury, BL9 0EJ
0161 253 5550
planning.policy@bury.gov.uk
(October 2015)